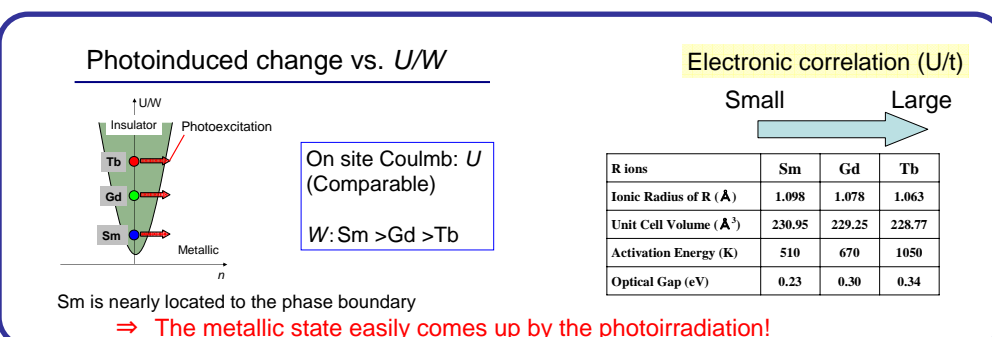
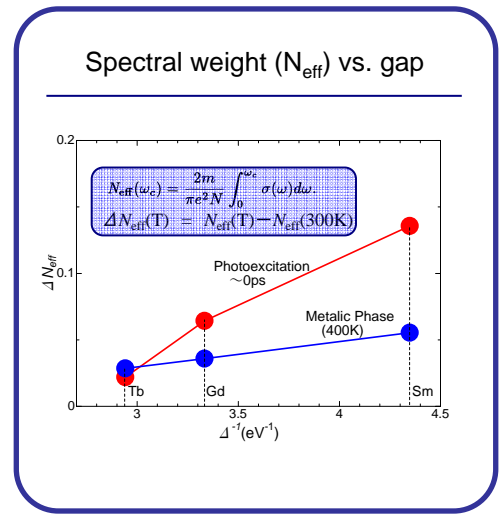
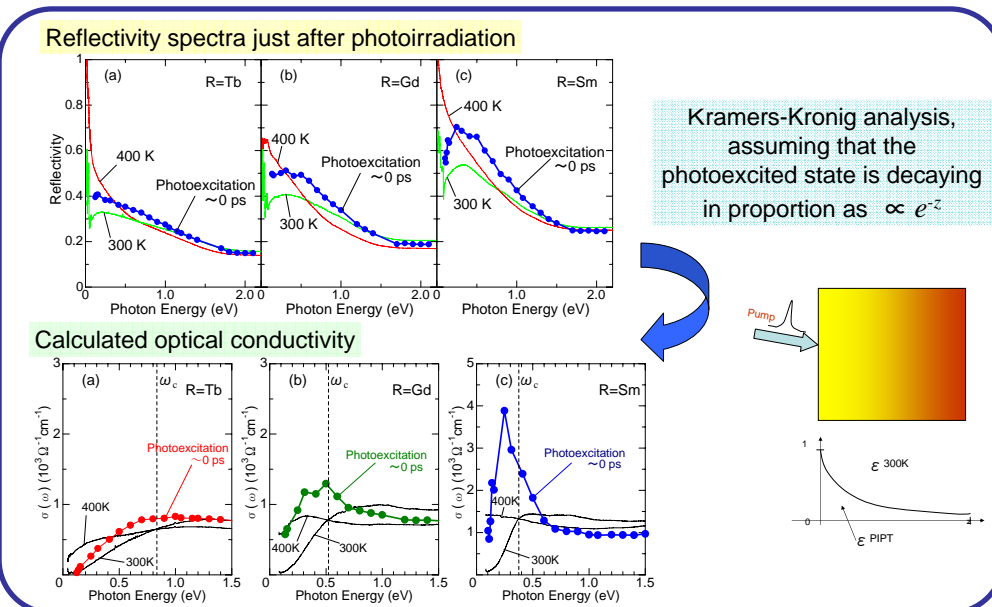
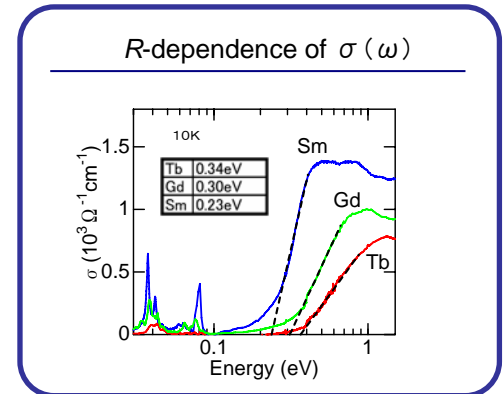
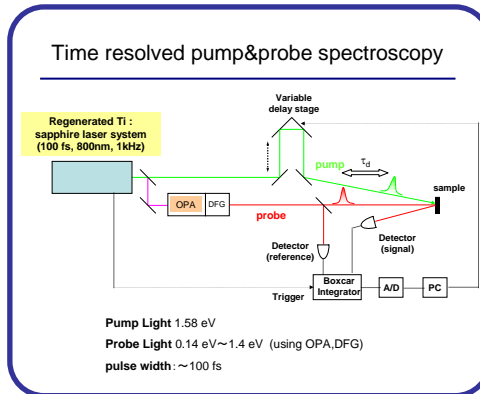
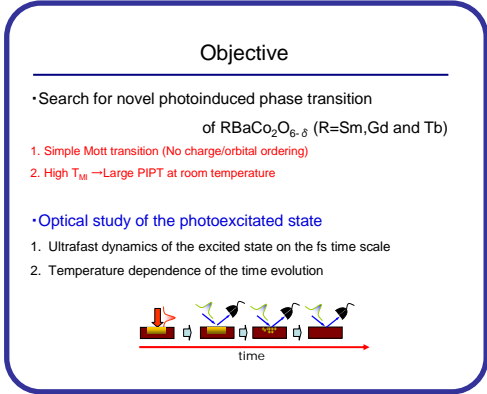
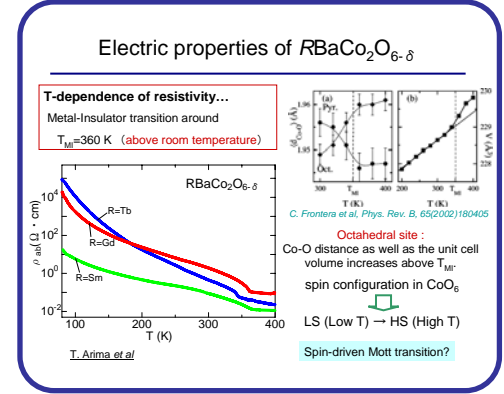
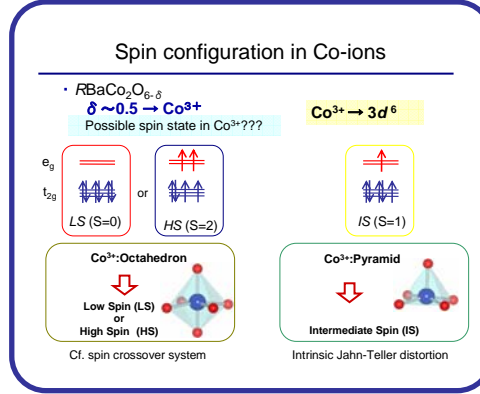
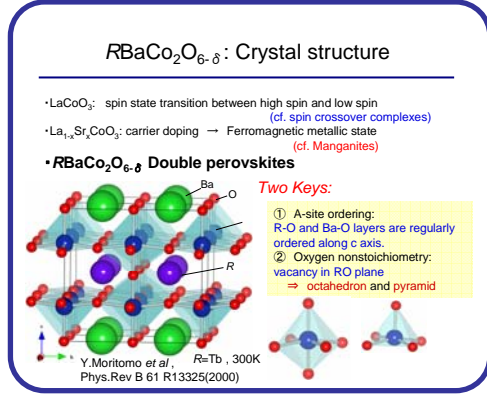


Photoinduced Gigantic and Ultrafast Spectral Weight Transfer in $R\text{BaCo}_2\text{O}_{6-\delta}$ ($R=\text{Tb, Gd and Sm}$)

Y. Okimoto^A, T. Miyata^A, M. Kurashima^A, K. Onda^A, T. Ishikawa^A, S. Koshihara^{A,B}, and T. Arima^C

Tokyo Institute of Technology^A, JST, CREST^B, Tohoku University^C



Summary

Pump & probe spectroscopy in $R\text{BaCo}_2\text{O}_{5.5}$ ($R=\text{Sm, Gd and Tb}$)

- Clear PIPT was observed at room temperature.
- The quantity of the transferred spectral weight by the photoillumination is proportional to W .

\Rightarrow Strong correlation between PIPT and U/W Distance from the phase boundary